

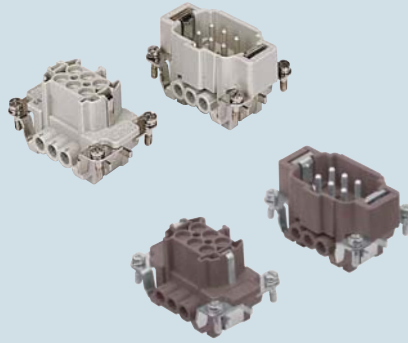
enclosures: **size "44.27"**

- standard** ..... page: 176 - 179
- for 180 °C** ..... page: 180
- aggressive environments** page: 181
- EMC** ..... page: 182

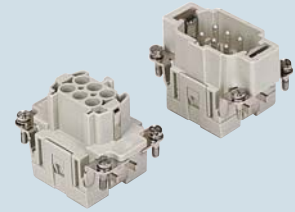
panel supports:  
**COB** ..... page: 258 - 259

- characteristics according to EN 61984:  
**16A 500V 6kV 3**
- UL, CSA, CCC, GL certified
- for maximum current load, see the insert load curve section on page 31

## inserts, screw terminal connections



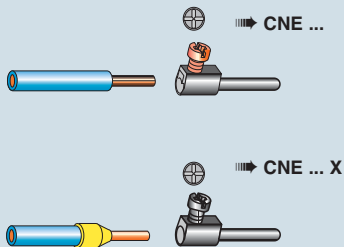
## inserts, spring terminal connections



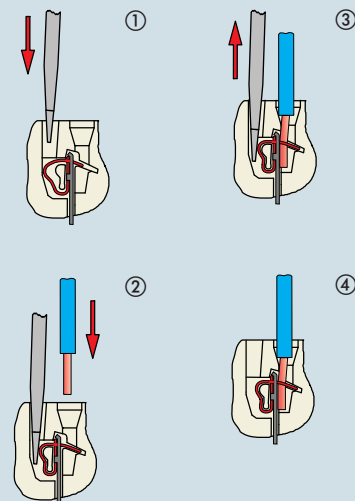
description	part No.	part No.
indirect, with plate 1) female inserts with female contacts male inserts with male contacts	<b>CNEF 06 T</b> <b>CNEM 06 T</b>	
direct, without plate 2) female inserts with female contacts male inserts with male contacts	<b>CNEF 06 TX</b> <b>CNEM 06 TX</b>	
indirect, with plate 1), use in up to 180 °C female inserts with female contacts, brown male inserts with male contacts, brown	<b>CNEF 06 RYT *</b> <b>CNEM 06 RYT *</b>	
spring terminal female inserts with female contacts male inserts with male contacts		<b>CSEF 06</b> <b>CSEM 06</b>

- 1) for non-prepared conductors
- 2) for bush terminal conductors

\* CNE...RY version without plastic wire insertion guide cover available on request.

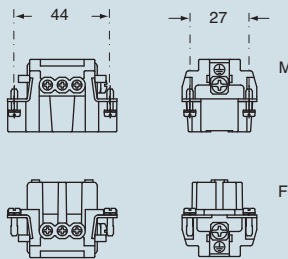


### connection with spring terminal

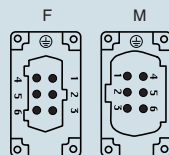


dimensions shown are not binding  
and may be changed without notice

### dimensions in mm

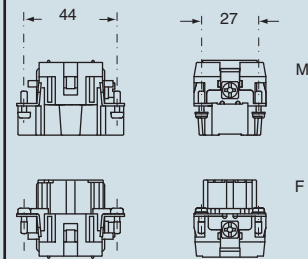


### contacts side (front view)

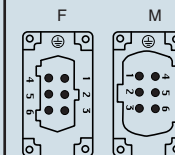


- inserts with plate, for section conductors:  
0.5 - 2.5 mm<sup>2</sup> - AWG 20 - 14
- inserts without plate, for section conductors:  
0.25 - 2.5 mm<sup>2</sup> - AWG 24 - 14
- torsion couple recommended for conductor fastening screws and stripping length see section feature of inserts on page 13

### dimensions in mm



### contacts side (front view)



- inserts for section conductors:  
0.14 - 2.5 mm<sup>2</sup> - AWG 26 - 14
- stripping length see section feature of inserts on page 13